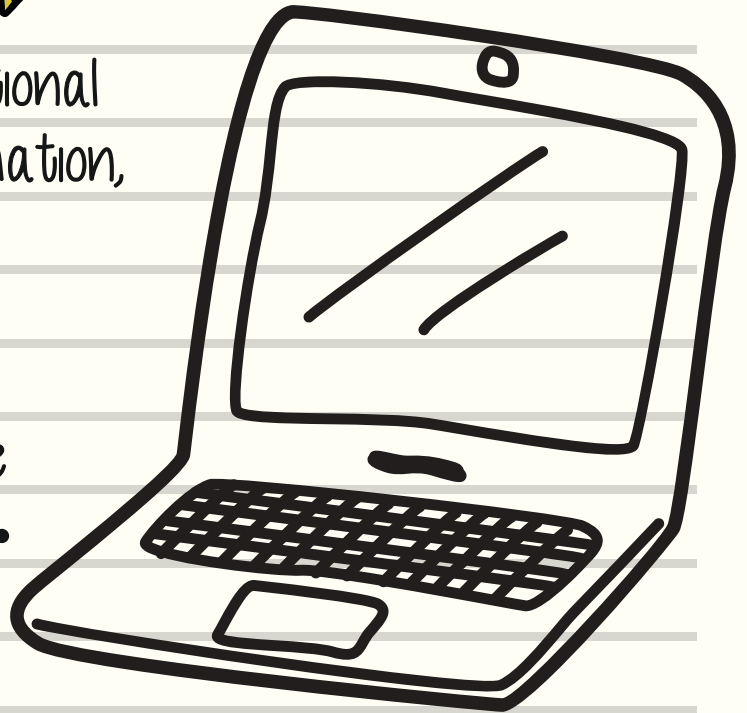




MILTON KEYNES
SEND IAS

Milton Keynes Special Educational
Needs and Disabilities information,
Advice and Support service



We're here to help you!
face 2 face • on the phone
• by email • on our website •
on facebook



Get in touch today!

INFORMATION

YOUR RIGHTS

YOUR CHOICES

YOUR VOICE

YOUR LIFE

ADVICE

Post-16 Opportunities

- Work?
- Further Education?
- Training?
- Apprenticeships?



Preparing for adulthood

- Health services
- Social care services
- Independent living

Education, Health and Care Plans (EHCPs)

- Requesting needs assessment
- Understanding the process
- Getting your voice heard
- Checking plans
- Reading drafts
- Annual reviews

SUPPORT

@ Meetings
Planning
Writing Letters
Talking it through



milton keynes council